



## President's Column

by Dean McAlister

When I became a member of NARFE in 2004, shortly after moving back to our homeplace near Charleston, little did I know that I would be addressing you as President in 2008. I am honored that you have chosen me as President. Thank you for the privilege of serving you.

I want to share with you my vision for our Chapter.

First, we are an organization of peoples with one common thread—we are retired federal employees. As each of us know that distinction affords us some privileges that most private sector retirees do not enjoy. However, we too encounter areas that have the potential of adversely affecting our financial planning as retired federal employees. In fact, three areas of concern within the NARFE are currently reducing available income to each member of NARFE. These are Premium Conversion, Windfall Elimination Provision (WPO) and Government Pension Offset (GPO). These are issues at the heart of NARFE's effort to implement positive changes in Congress. Please become familiar with each area and educate yourself on how they may adversely affect you financially. Also, you should be able to convey your personal concerns to individuals or groups that are in a position to implement changes in these areas. Maxine Eaves will continue as our Legislative Advisor this year. If you have any questions, ask her or any of our other officers.

Second, each officer by accepting their position of our Chapter, has committed to acquaint each of you with all the benefits members are entitled to. I think we have done a good job in the past of accomplishing this goal.

During my term as president I want us

(cont. at right)

**N**ational  
**A**ctive  
**R**etired  
**F**ederal  
**E**mployees

## CHAPTER 860 Cleveland, TN 37312 Winter 2008

\*\*\*\*\*

### **REMEMBER! Next Chapter Meeting**

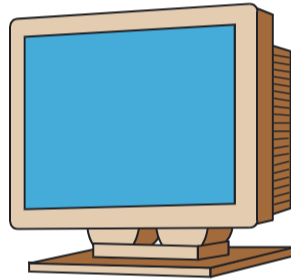
**WHAT?** Covered Dish Dinner  
w/meeting afterwards

**WHEN?** February 14, 2008 - Thurs @  
6:30 PM

**WHERE?** St. Therese Catholic Church

**SPEAKER?** Judge Randolph on Wills  
and Powers of Attorney

+++++



Basic information about the Cleveland Chapter of NARFE can be viewed online at

[www.narfecleveland.tn.org](http://www.narfecleveland.tn.org). Access to

our newsletter will be posted there also.

### President's Column (cont.)

to continue that strong effort and improve on it as you our members want. I think our programs have been great. They are our major effort to provide information to you that, hopefully, will help you plan for particular areas of your life. In addition, we want to continue to include some "fun" and "community-oriented" programs. This is where our officers need your input. Please let me or Helen Evans, our program coordinator, know what you would like in the area of programs. Another area of service to our members is through our Service Officer, Don Rollens. This position is structured to step in and help members on an individual basis when the need arises. Don has done a good job in the past and will continue to assist you in the future, so call him when you need his help.

Third, the topic of recruitment and retention of members is a major concern

at all levels of NARFE. The retention rate in our Chapter is very good. We certainly can do better in the area of recruitment. This year I ask you to make this a high priority as a NARFE membership or simply bump into potential members explain membership to them and its benefits. Make yourself a goal this year to talk with someone about joining our Chapter. Jim Burner, our Membership Chairman can assist you in this area.

Last, but certainly not least is fellowship—Chapter fellowship. I think this is the glue that holds our Chapter together. We have the same major concerns as I pointed out earlier, but when we come together in our meetings every two months I sense a spirited kindred within our group. A big “thank-you” in this area goes to Ruth Hale for coordinating our Chapter Sunshine effort. Our meetings are well attended by members, not to say we certainly welcome members that aren’t regular attendees, I believe that speaks well of our desire to fellowship with each other. Now for the highlight of each meeting—the “eatin” part. Bertha and I have commented several times that we believe these potluck meals are consistently the best we have experienced.

NARFE - CHAPTER 860  
Betsy Deacon, Editor  
192 Doe Run NE  
Charleston, TN 37310

(President cont)

The February program will be on “Wills and Powers of Attorney”. Judge Sheridan Randolph, Criminal Judge for Bradley County General Sessions Court will be our guest speaker. We are fortunate to be able to schedule Judge Randolph, so please try to attend this special meeting. We would like to have a good attendance for his presentation.

\*\*\*\*\*

**CHAPTER 860 OFFICERS**

- President - Dean McAlister*
- Vice-President - Don Ledford*
- Secretary - Danny Britt*
- Treas/Programs - Helen Evans*
- Service Officer - Don Rollens*
- Legislative - Maxine Eaves*
- Sunshine - Ruth Hale*
- Membership Chair - Jim Burner*

\*\*\*\*\*

**SPECIAL THANKS TO BANK OF CLEVELAND (WHERE WE HAVE OUR ACCOUNT) FOR PROVIDING PRINTING SUPPORT**